

84

WEST SANTA  
CLARA



Premier Downtown San Jose Office Space

For Lease |  $\pm 588$  SF -  $\pm 12,694$  SF

**CBRE**

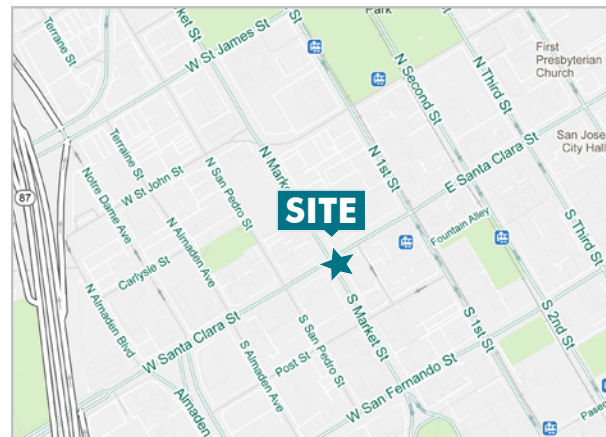




# 84 West Santa Clara Street, Downtown San Jose

For Lease |  $\pm 588$  SF -  $\pm 12,694$  SF

- Fantastic Central Location in San Jose's Reborn Downtown
- 8-story office building
- Abundant natural light with floor to ceiling windowlines
- Local and very responsive ownership
- Full floor opportunities available
- Comcast and AT&T (Fiber Service) Internet available
- Conveniently located near restaurants, hotels, shopping, entertainment and transportation
- Walk to Caltrain & VTA Lightrail
- Easy access to Highway 87, 101 and 280
- Underground preferred parking available at \$130/Space/Month
- Common area conference room
- Scheduled building enhancements
- Additional parking available at nearby San Jose City Garages
- Shower



## AVAILABLE SPACE

Suite	RSF ( $\pm$ )	Rental Rate	Comments
200	12,694	\$2.95 FSG	Full floor option. Interiors to suit. <a href="#">See Separate Flyer</a>
340	588	\$2.35 FSG	Private office & reception.
380	1,755	\$2.35 FSG	Two offices, conference room, IT room.
500	2,310	\$2.35 FSG	Corner suite with great views and glass wall conference room.
720	1,532	\$2.35 FSG	Three private offices. Open area.

PLEASE CONTACT  
ONE OF THESE  
EXCLUSIVE AGENTS:

**Vince Machado**  
Senior Vice President  
Lic. 01317553  
+1 408 453 7411  
vince.machado@cbre.com

**Matthew Taylor**  
First Vice President  
Lic. 01897355  
+1 408 453 7469  
matthew.taylor@cbre.com

CBRE, Inc.  
225 W. Santa Clara Street  
12th Floor, San Jose, CA 95113  
[www.cbre.com/siliconvalley](http://www.cbre.com/siliconvalley)

© 2016 CBRE, Inc. This information has been obtained from sources believed reliable. We have not verified it and make no guarantee, warranty or representation about it. Any projections, opinions, assumptions or estimates used are for example only and do not represent the current or future performance of the property. You and your advisors should conduct a careful, independent investigation of the property to determine to your satisfaction the suitability of the property for your needs. Photos herein are the property of their respective owners and use of these images without the express written consent of the owner is prohibited. CBRE and the CBRE logo are service marks of CBRE, Inc. and/or its affiliated or related companies in the United States and other countries. All other marks displayed on this document are the property of their respective owners. N:\Team-Marketing\84 W Santa Clara 5th\84W Santa Clara St\_InteractiveFlyer\_v07.indd November 11, 2016

**CBRE**



# 84 West Santa Clara Street, Downtown San Jose

For Lease |  $\pm 588$  SF -  $\pm 12,694$  SF

## Building Upgrades

- Elevator modernization
- Restroom upgrades
- New Entry
- Outdoor collaboration areas
- Enhanced Security Upgrades
- Shower
- Bike storage



PLEASE CONTACT  
ONE OF THESE  
EXCLUSIVE AGENTS:

**Vince Machado**  
Senior Vice President  
Lic. 01317553  
+1 408 453 7411  
[vince.machado@cbre.com](mailto:vince.machado@cbre.com)

**Matthew Taylor**  
First Vice President  
Lic. 01897355  
+1 408 453 7469  
[matthew.taylor@cbre.com](mailto:matthew.taylor@cbre.com)

CBRE, Inc.  
225 W. Santa Clara Street  
12th Floor, San Jose, CA 95113  
[www.cbre.com/siliconvalley](http://www.cbre.com/siliconvalley)

© 2016 CBRE, Inc. This information has been obtained from sources believed reliable. We have not verified it and make no guarantee, warranty or representation about it. Any projections, opinions, assumptions or estimates used are for example only and do not represent the current or future performance of the property. You and your advisors should conduct a careful, independent investigation of the property to determine to your satisfaction the suitability of the property for your needs. Photos herein are the property of their respective owners and use of these images without the express written consent of the owner is prohibited. CBRE and the CBRE logo are service marks of CBRE, Inc. and/or its affiliated or related companies in the United States and other countries. All other marks displayed on this document are the property of their respective owners. N:\Team-Marketing\84 W Santa Clara St\84W Santa Clara St\_InteractiveFlyer\_v07.indd November 11, 2016

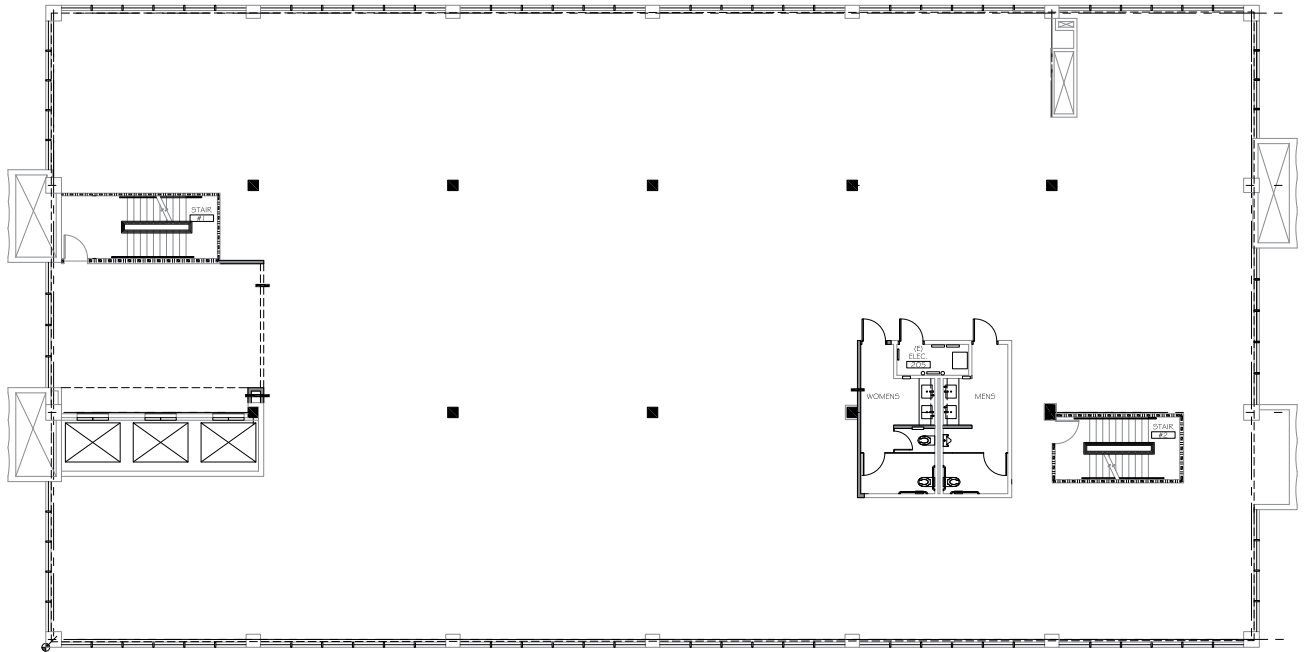
# CBRE



# 84 West Santa Clara Street, Downtown San Jose

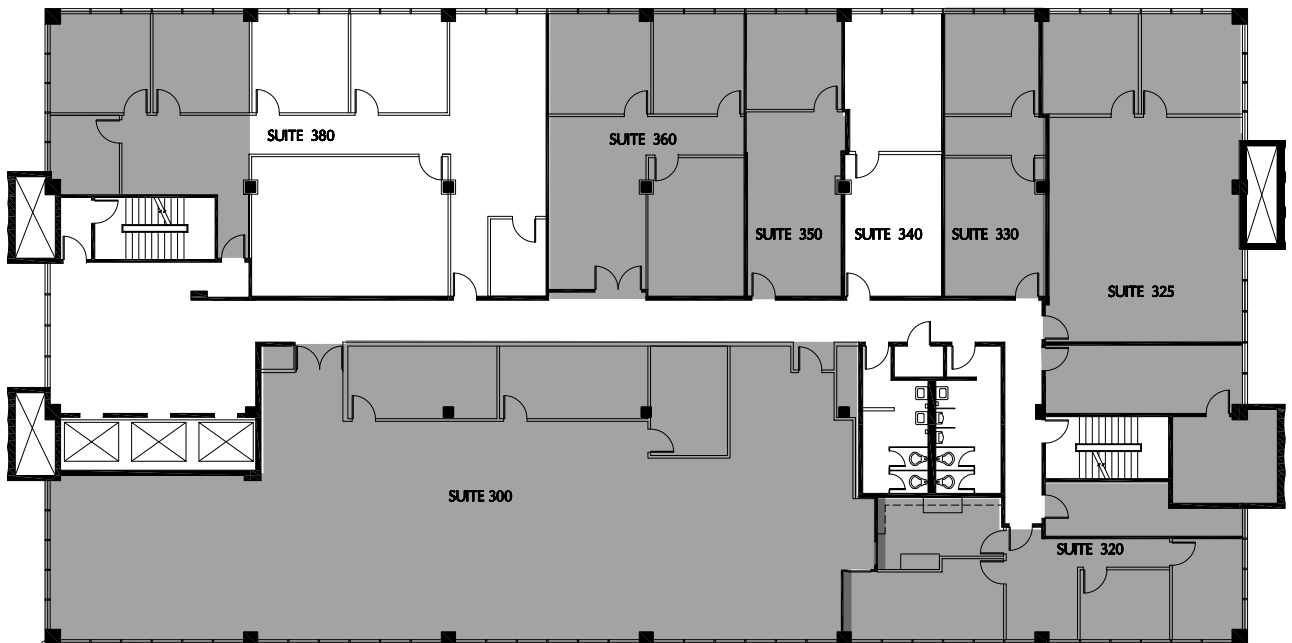
**Suite 200:  $\pm 12,694$  SF - [See Separate Flyer](#)**

**2nd  
Floor Plan**



**Suite 340:  $\pm 588$  SF | Suite 380:  $\pm 1,755$  SF**

**3rd  
Floor Plan**



PLEASE CONTACT  
ONE OF THESE  
EXCLUSIVE AGENTS:

**Vince Machado**  
Senior Vice President  
Lic. 01317553  
+1 408 453 7411  
[vince.machado@cbre.com](mailto:vince.machado@cbre.com)

**Matthew Taylor**  
First Vice President  
Lic. 01897355  
+1 408 453 7469  
[matthew.taylor@cbre.com](mailto:matthew.taylor@cbre.com)

CBRE, Inc.  
225 W. Santa Clara Street  
12th Floor, San Jose, CA 95113  
[www.cbre.com/siliconvalley](http://www.cbre.com/siliconvalley)

© 2016 CBRE, Inc. This information has been obtained from sources believed reliable. We have not verified it and make no guarantee, warranty or representation about it. Any projections, opinions, assumptions or estimates used are for example only and do not represent the current or future performance of the property. You and your advisors should conduct a careful, independent investigation of the property to determine to your satisfaction the suitability of the property for your needs. Photos herein are the property of their respective owners and use of these images without the express written consent of the owner is prohibited. CBRE and the CBRE logo are service marks of CBRE, Inc. and/or its affiliated or related companies in the United States and other countries. All other marks displayed on this document are the property of their respective owners. N:\Team-Marketing\84 W Santa Clara St\84W Santa Clara St\_InteractiveFlyer\_v07.indd November 11, 2016



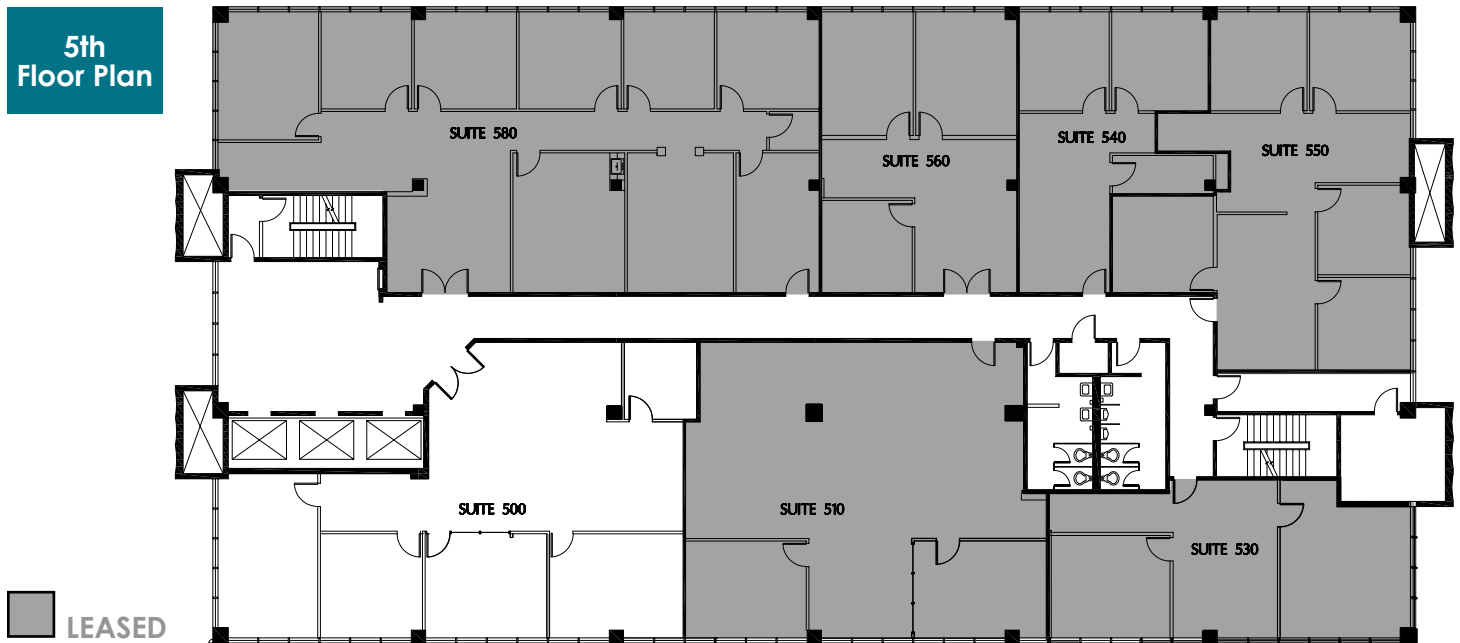




## 84 West Santa Clara Street, Downtown San Jose

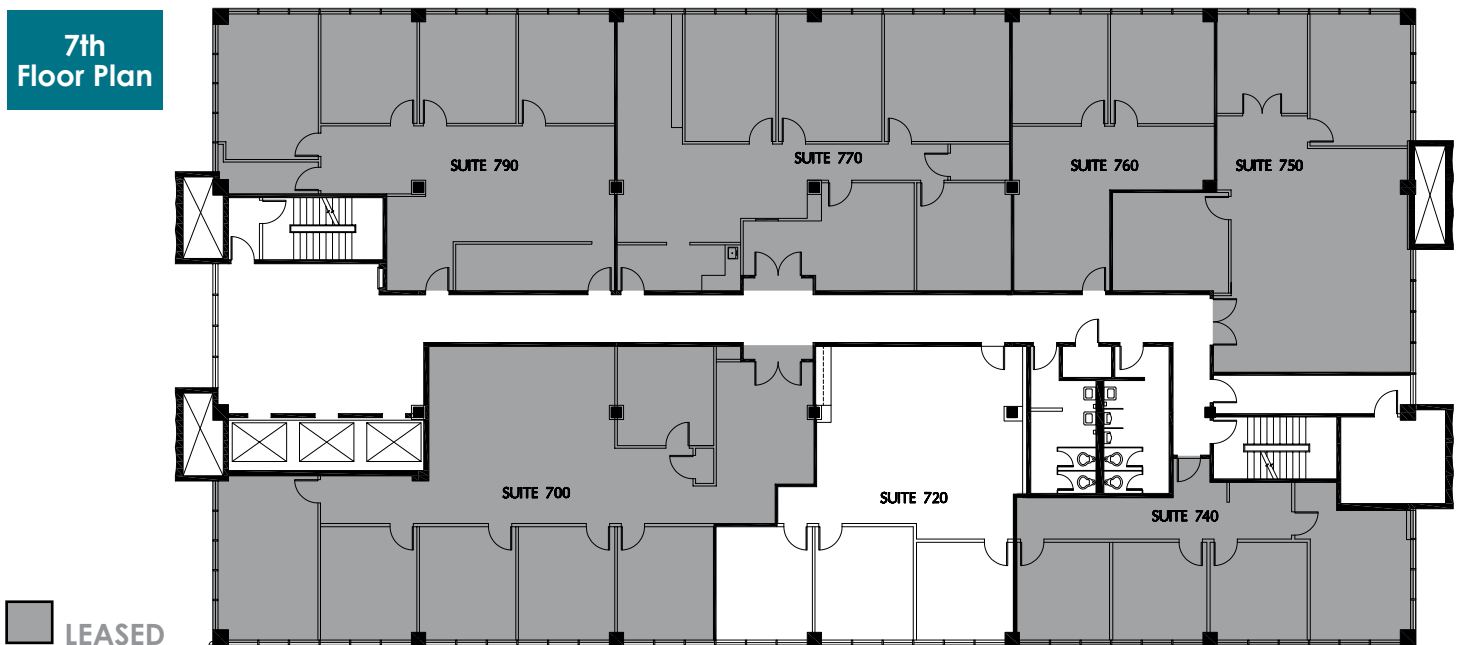
### Suite 500: $\pm 2,310$ SF

#### 5th Floor Plan



### Suite 720: $\pm 1,532$ SF

#### 7th Floor Plan



PLEASE CONTACT  
ONE OF THESE  
EXCLUSIVE AGENTS:

**Vince Machado**  
Senior Vice President  
Lic. 01317553  
+1 408 453 7411  
vince.machado@cbre.com

**Matthew Taylor**  
First Vice President  
Lic. 01897355  
+1 408 453 7469  
matthew.taylor@cbre.com

CBRE, Inc.  
225 W. Santa Clara Street  
12th Floor, San Jose, CA 95113  
[www.cbre.com/siliconvalley](http://www.cbre.com/siliconvalley)

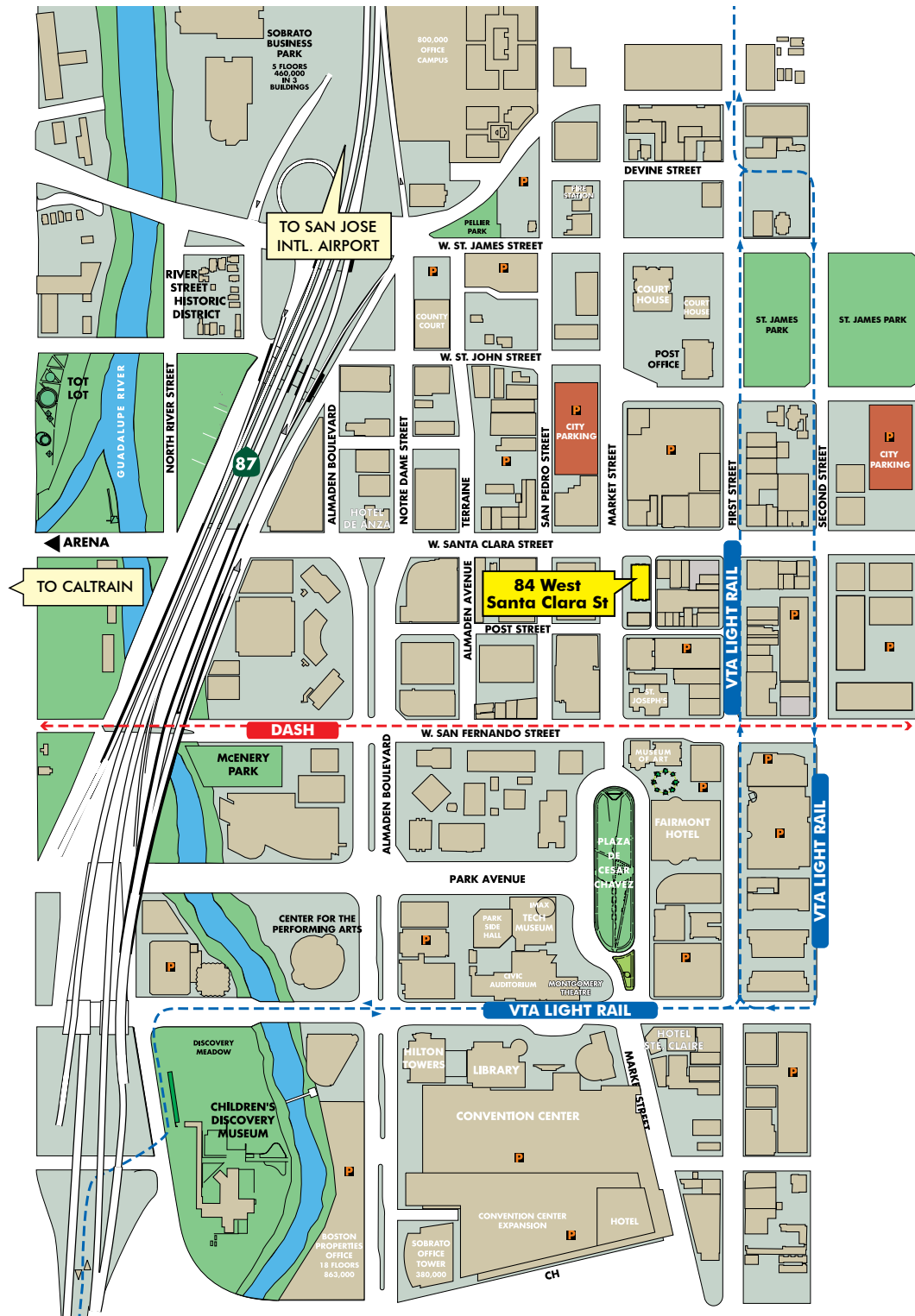
© 2016 CBRE, Inc. This information has been obtained from sources believed reliable. We have not verified it and make no guarantee, warranty or representation about it. Any projections, opinions, assumptions or estimates used are for example only and do not represent the current or future performance of the property. You and your advisors should conduct a careful, independent investigation of the property to determine to your satisfaction the suitability of the property for your needs. Photos herein are the property of their respective owners and use of these images without the express written consent of the owner is prohibited. CBRE and the CBRE logo are service marks of CBRE, Inc. and/or its affiliated or related companies in the United States and other countries. All other marks displayed on this document are the property of their respective owners. N:\Team-Marketing\84 W Santa Clara 5th\84W Santa Clara 5th Interactive Flyer\_v07.indd November 11, 2016

# CBRE

# 84 WEST SANTA CLARA

## 84 West Santa Clara Street, Downtown San Jose

### AMENITIES MAP



PLEASE CONTACT  
ONE OF THESE  
EXCLUSIVE AGENTS:

**Vince Machado**  
Senior Vice President  
Lic. 01317553  
+1 408 453 7411  
vince.machado@cbre.com

**Matthew Taylor**  
First Vice President  
Lic. 01897355  
+1 408 453 7469  
matthew.taylor@cbre.com

CBRE, Inc.  
225 W. Santa Clara Street  
12th Floor, San Jose, CA 95113  
www.cbre.com/siliconvalley

© 2016 CBRE, Inc. This information has been obtained from sources believed reliable. We have not verified it and make no guarantee, warranty or representation about it. Any projections, opinions, assumptions or estimates used are for example only and do not represent the current or future performance of the property. You and your advisors should conduct a careful, independent investigation of the property to determine to your satisfaction the suitability of the property for your needs. Photos herein are the property of their respective owners and use of these images without the express written consent of the owner is prohibited. CBRE and the CBRE logo are service marks of CBRE, Inc. and/or its affiliated or related companies in the United States and other countries. All other marks displayed on this document are the property of their respective owners. N:\Team-Marketing\84 W Santa Clara St\84W Santa Clara St\_InteractiveFlyer\_v07.indd November 11, 2016

**CBRE**